

Flat 14, Heathside

562 Finchley Road, London, NW11 7SB





Flat 14 is a lovely first floor, two-bedroom retirement apartment which has been recently redecorated and has new carpet laid throughout. The property boasts a spacious, bright lounge with direct access to the west facing balcony, which has the sun most of the day and all afternoon until sun set. The bright lounge is a good size with ample room for a dining table and chairs. The kitchen has a gas hob, built in oven and dishwasher, freestanding washing machine and fridge freezer plus ample cupboard space. The bathroom has a walk-in shower, mirrored cabinet and heated towel rail.





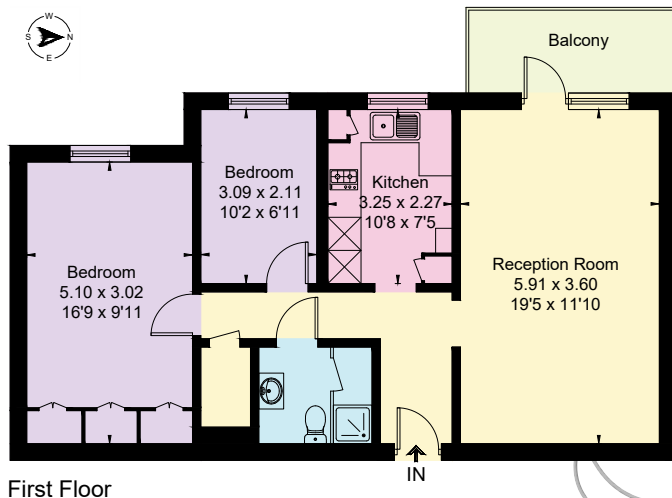
Heathside is a luxurious well-maintained development, ideally located on the corner of Finchley Road and West Heath Avenue and a short walk to Golders Hill Park and Hampstead Heath. It is close to Golders Green tube station (Northern Line), which provides 15 minute access to Central London and includes numerous local buses and a National Express bus terminal with links across the UK and Europe. There are a variety of shops and restaurants in the area and Brent Cross Shopping Centre is nearby. Heathside benefits from on-site parking and landscaped communal gardens that get the sun in the morning.

Accommodation:

- Spacious lounge
- Fitted kitchen with gas hob, oven and dishwasher. Freestanding washing machine and fridge freezer
- Large master bedroom with built in storage
- Second bedroom
- Bathroom with walk-in shower, large wall mounted mirrored cabinet, wash basin, WC and heated towel rail.
- Walk-in storage cupboard with shelving and a safe
- Entry phone system

Heathside has:

- ✓ Luxurious guest suite
- ✓ Beauty salon
- ✓ Modern fully fitted communal kitchen for entertaining
- ✓ Relaxing and comfortable communal lounge
- ✓ Landscaped front and rear gardens
- ✓ Ample on-site Parking
- ✓ 2 Lifts
- ✓ House Manager
- ✓ Caretaker/Handyman
- ✓ 24-hour emergency call system



Approximate gross internal area: **66.4 sq m / 715 sq ft**

Leasehold: **99 years commencing 25th March 1985**

Ground rent: **£60 pa fixed for the term**

Local Authority: **London Borough of Barnet (Band F)**

Energy Performance Rating: **C**

offers in the region
of **£450,000**

To arrange a site visit, please contact

Karen Forbes on **0208 458 8700** or heathside@ospreymc.co.uk / Website: www.ospreymc.co.uk

These particulars are for general information only and do not constitute any part of an offer or a contract. All statements contained herein are made without responsibility on the part of Osprey or the Vendors or Lessors and are not to be relied on as a statement or representation of fact. Intending purchasers or lessors must satisfy themselves or otherwise as to the correctness of each of the statements contained in these particulars. Osprey has not tested any of the appliances in this property.